

IE  HP

Foundation

We inspire and ignite the health of the Inland Empire.

Champions for Vibrant Health Leadership Network Information Session

Sara Omari, Strategy Program Administrator

June 27, 2024

Information Session Overview

- IEHP Foundation: Mission, Vision, Values and Strategies
- Champions for Vibrant Health Leadership Network: Timeline, Goals, Expectations, Eligibility Requirements and Evaluation
- Grant Management Portal: Access and Navigation
- Questions & Answers (time permitting)

A recording of this webinar will be available at iehpfoundation.org/grants within 3 business days.

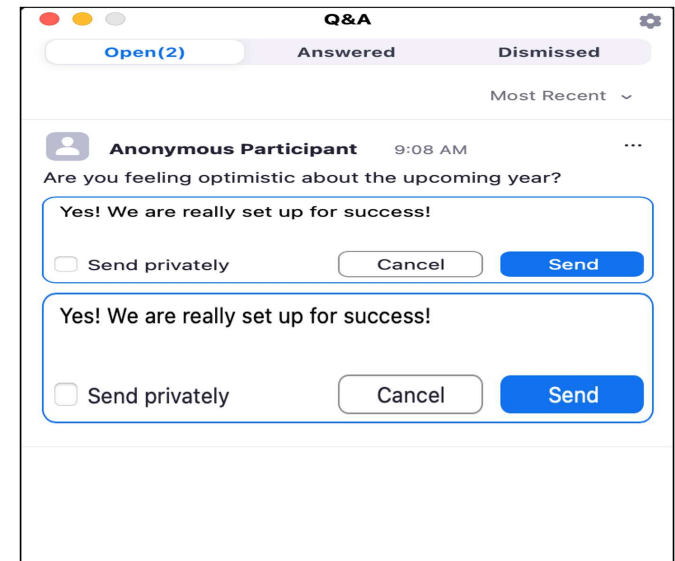
A follow-up email will also be sent to those who registered for the call with a link to the recording and copy of this presentation.

Information Session Logistics

As you have questions, type them into the Zoom Q & A feature.

IEHP Foundation Staff will do our best to answer them live, but may follow-up after the webinar.

For additional questions, email grants@iehpfoundation.org. Allow 1 – 3 business days for a response.



About IEHP Foundation

Igniting Vibrant Health in the IE

IEHP & IEHP Foundation: Working Together to Advance Vibrant Health



Advancing Vibrant Health in the Inland Empire.

IEHP Foundation is an independent 501(c)(3) designed to ensure all individuals in the Inland Empire have access to Vibrant Health – extending beyond traditional healthcare services and addressing the social determinants of health for the region’s most vulnerable populations.

Inland Empire Health Plan (IEHP) is a local managed care health plan that serves 1.6 million members across Riverside and San Bernardino counties to provide them with access to Optimal Care and Vibrant Health.



Advancing Vibrant Health

Our Mission...

is to inspire and ignite the health of the Inland Empire.

Vibrant Health...

means that the residents of San Bernardino & Riverside counties have access to and are experiencing a better, more fulfilling life – overall physical & mental health & well-being.

Our goal...

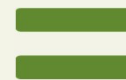
is to advance greater health equity across the region by partnering with and strengthening community-based organizations and leadership by addressing:



Root Causes

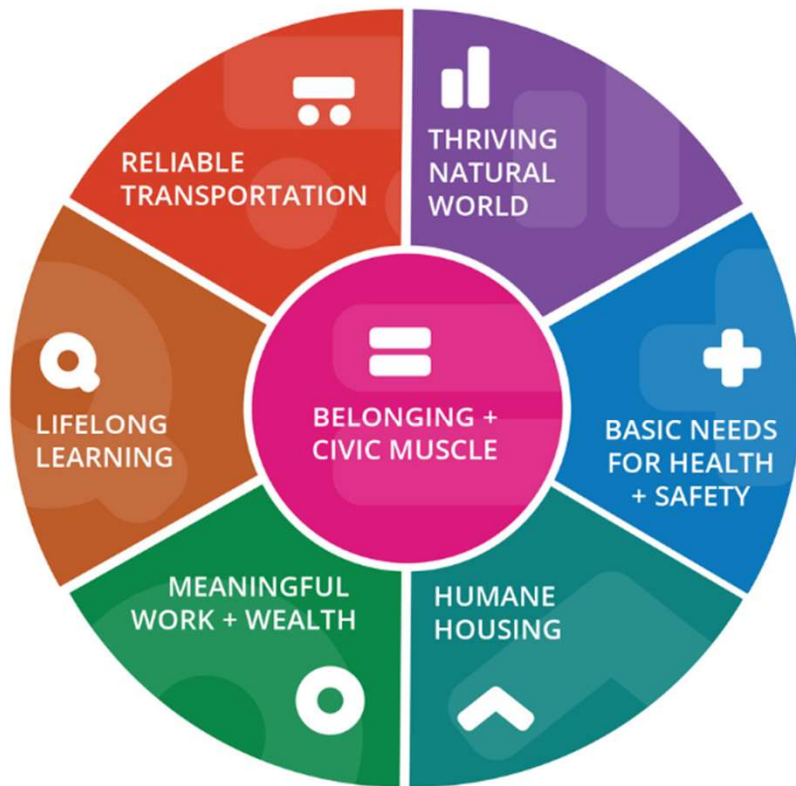


Core Needs



Health Equity

Laying the Foundation for Vibrant Health: Investing in the Vital Conditions for Health & Well-Being



- Framework for social determinants of health (SDOH)
- Adopted by 40+ federal organizations and strong regional efforts to align on this framework

Investing in Community for Improved Health Outcomes

To help achieve the promise of Vibrant Health in the Inland Empire, we will strategically invest in the strength of local community-based organizations through the following community investment strategies:



Public Policy & Advocacy



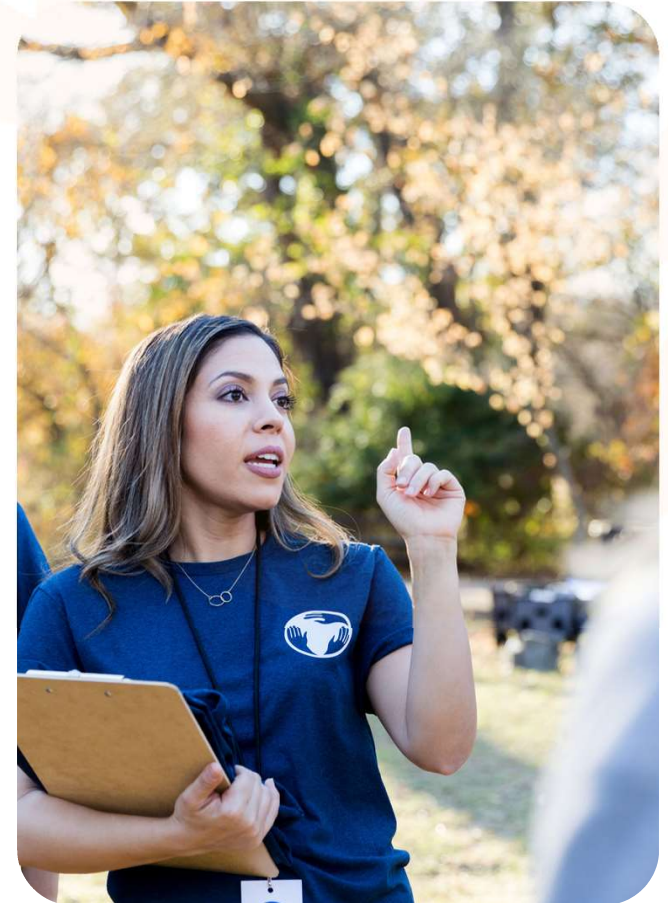
Regional Capacity Building



Direct Community Investment



Special Projects & Place-Based Projects



Meeting Space for Nonprofits

IE nonprofit organizations can access meeting space for business-related meetings, seminars, and convenings located within IEHP's Center for Learning & Innovation in Rancho Cucamonga, CA.



Scan the QR code to submit the event request form.



Become a Champion for Vibrant Health

The vital community partners who collaborate and engage with Foundation through trainings, grants and events, are considered as our:





CHAMPIONS FOR
VIBRANT HEALTH
Leadership Network



Summary



A two-year leadership development program, with general operating support funds, for Inland Empire community-based organizations that address the social determinants of health.

This opportunity is more than a grant — it's joining together to amplify our voices and expand resources to build vibrant health across the IE.



In the next few slides, the following will be discussed:

- Alignment with Community Need
- Goal and Expectations
- Eligibility Requirements
- Key Dates and Deadlines
- Application Process Overview

Alignment with Community Need

Through listening sessions and a review of the nonprofit landscape, the following needs were identified:

- Flexible, multi-year funding that supports infrastructure and capacity building
- Investment in nonprofit leadership that extends beyond a webinar or one-day event
- Succession planning and developing next-gen leaders
- Collective advocacy and narrative building

Goals & Key Measures of Success

- **Increased organizational capacity**, including strengthened intraorganizational leadership at multiple levels that promotes long-term, sustainable success.
- **Increased collective advocacy** leading to a regionally shared narrative that promotes health equity in the Inland Empire.
- **Expanded private and public funding** to the Inland Empire that improves regional capacity and sustainable sources of funding to local community-based organizations.
- **Expanded health equity** in the Inland Empire as community members' core health needs are met by being better connected with information, resources and services necessary for experiencing Vibrant Health.

In short, building the bench of nonprofit leadership/trusted messengers in the community & strengthening our region's advocacy muscle.

Expectations of Engagement

An Executive and Emerging Leader is identified by each organization to engage in all activities over the course of 2 years (January 2025 – December 2026)

- **Executive Leader:** Preferably the highest-level staff member at an organization, typically an Executive Director, President or Chief Executive Officer, or another key senior executive leader such as COO or Vice President.
- **Emerging Leader:** A mid-level staff member at an organization who demonstrates the potential to emerge into an executive leader for the organization, typically a vice-president, director or manager role

Both leaders must be able to commit to attending **six** annual gatherings each year:

- 4 in-person local half-to-full day convenings
- 1 in-person advocacy trip to Sacramento (2 days, 1 night)
- 1 in-person leadership retreat (3 days, 2 nights)
- Completing two biannual progress reports

Commitment to Learning

IEHP Foundation wants to learn with our community partners and aims to develop a leadership collective that is responsive to the needs of the selected organizations and leaders.

IEHP Foundation will select up to 40 organizations for the Leadership Network.



Flexible Funding

Two-year, general operating support grant:

- **For organizations with an annual operating budget less than \$1 million**, the grant award amount will be up to \$25,000 per year (\$50,000 over two years).
- **For organizations with an annual operating budget over \$1 million**, the grant award amount will be up to \$75,000 per year (\$150,000 over two years).

Two equal payments will be disbursed in December 2024 and December 2025.

A large, stylized orange graphic element consisting of a thick, curved line that forms a partial circle or a large letter 'D' shape, positioned on the left side of the page.

IEHP Foundation looks to award approximately \$2 million in total.

Key Dates & Deadlines

The Champions for Vibrant Health Leadership Network selection process will involve a two-part application process and will follow the timeline below:

- Call for applications released: June 13
- Round 1 (LOI) Applications* due: July 15 (5pm)
- Invitations to Final Round Applications: Late August
- Final Round Application due: October 4 (5pm)
- Interview and site visits scheduled, as needed: October 7 – November 15
- Awards Announced: December 2



**Due to limitations in the grants management portal, the Round 1 application will appear in the Letter of Intent (LOI) section of the portal.*

Eligibility Requirements

Before being able to access the Round 1 (LOI) application, applicants will need to complete an eligibility quiz to ensure their organization meets the following eligibility requirements for this opportunity.

1. Is a public, 501c(3) nonprofit with up-to-date tax (Form 990) filings
2. Has been in operation as an officially recognized nonprofit for 3 years or more
3. Annual operating budget is \$250,000 or more
4. Meets the leadership engagement requirement
5. Serves families with children (18 years and younger) in the Inland Empire
6. Has a 2024 Candid Guidestar Seal of Transparency that is gold or platinum

Public, 501(c)(3) Nonprofit

- Must have own EIN and cannot be fiscally sponsored
- Must be in good standing with the IRS and not delinquent on any tax filings
- Cannot be a private non-operating Foundation
- Cannot be a 501(c)(4) organization



Officially Recognized (3+ Years)



- Officially recognized means the organization had been given tax-exempt status as a nonprofit by CA and/or federal government
- Organizations that were fiscally sponsored for 3+ years and now have their own EIN may be considered. Email grants@iehpfoundation.org for consideration.

Annual Operating Budget

- The organization's annual operating budget for 2024 must be greater than \$250,000.
 - If operating on a calendar year, use projected budget for January 2024 – December 2024
 - If operating on a fiscal year, use projected budget for July 2024 – June 2025
- Annual operating budget includes all anticipated revenue and expenses for the organization.
- Do not count organizational assets (e.g., dividends, building) towards budget size, unless the organization is actively using the revenue from the assets in 2024.
- It is recommended that organizations that had a significant increase in their operating budget in 2024 from previous years include a narrative description of the reason behind the increase on the application.

Leadership Engagement

- Each organization must identify an executive and emerging leader who can commit to serving their organization over the next two years and commit to the planned activities.
- Each organization must have served organization for no less than 1 year.
 - Part-time employment or volunteering counts towards this time commitment
 - Consideration may be given to organizations who have leaders that have been at the organization less than 1 year but have served the Inland Empire for 2 or more years. Reach out to grants@iehpfoundation.org to inquire.
- Only 1 executive and 1 emerging leader can participate in the Champions for Vibrant Health Leadership Network

Population Served

- Organizations must serve Inland Empire families with children (18 years or younger) from one or more of the priority populations:
 - Low-income households and/or those living in poverty
 - Communities of Color
 - Communities furthest from health equity. This includes cities with a Healthy Places Index (HPI) score lower than the 25th percentile.
 - Communities that are remote or rural
- Organizations do not need to be headquartered in the Inland Empire but do need to demonstrate a significant presence in Riverside and/or San Bernardino Counties.
- Organizations do not need to serve these populations directly – could be a coalition that supports direct service providers.

Priority Vital Conditions



- For the Champions for Vibrant Health Leadership Network, organizations must focus on addressing at least one of the following:
 1. Basic Needs for Health & Safety
 2. Humane Housing
 3. Meaningful Work & Wealth
 4. Lifelong Learning
- Organizations can address more than one of these Vital Conditions.
- Refer to grant summary for link to more information about Vital Conditions.

Candid Guidestar Seal of Transparency



- Organizations must have a 2024 Candid Guidestar Seal of Transparency rating of either gold or platinum.
- Organizations can obtain this seal by updating their Candid profile with demographic and financial information. Updates can be completed in a day.
- If your organization has not claimed/verified a profile, plan for up to 5 business days for your organization's account to be verified.
- IEHP Foundation is leveraging Candid Guidestar to decrease administrative time to complete applications and enhance data available on nonprofit landscape.

Candid.

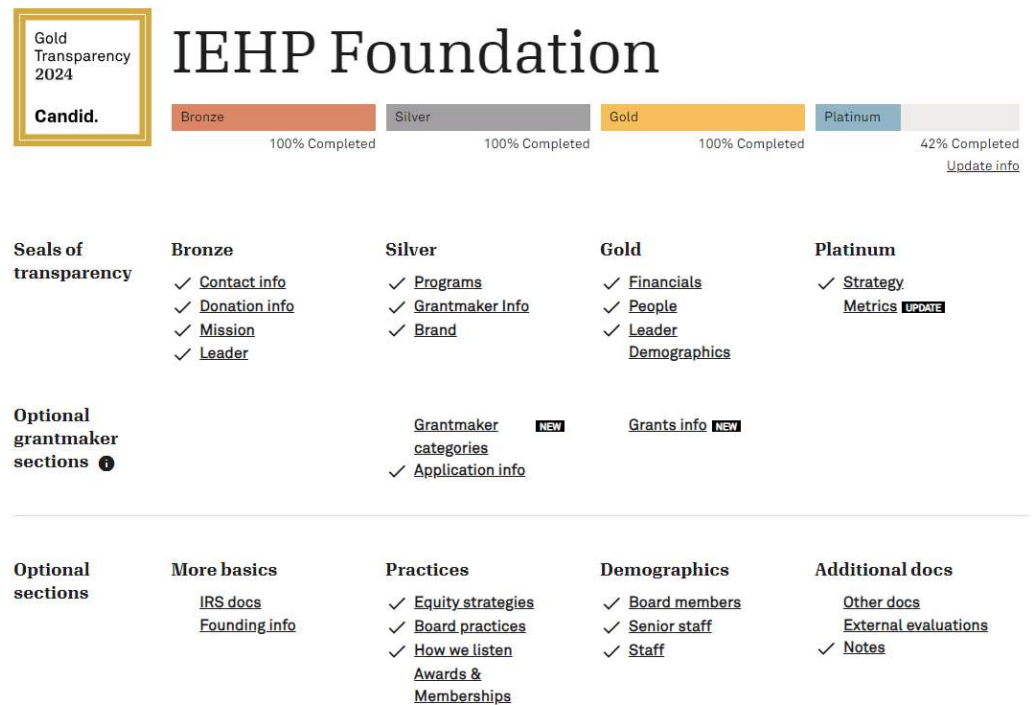


The state
of diversity
in the U.S.
nonprofit
sector



Candid Guidestar Seal of Transparency

- Candid Guidestar is to be updated on an annual basis.
- For information on how to update profile, [click here](#).
- Assistance from IEHP Foundation is available upon request.



The screenshot shows the IEHP Foundation's Candid Guidestar Seal of Transparency profile. At the top, a gold seal is displayed with the text "Gold Transparency 2024" and "Candid." Below this, a progress bar indicates the completion status for each seal level: Bronze (100% Completed), Silver (100% Completed), Gold (100% Completed), and Platinum (42% Completed). A link to "Update info" is provided for the Platinum seal.

The profile lists the following sections and their completion status:

Seals of transparency	Bronze	Silver	Gold	Platinum
	<ul style="list-style-type: none"> ✓ Contact info ✓ Donation info ✓ Mission ✓ Leader 	<ul style="list-style-type: none"> ✓ Programs ✓ Grantmaker Info ✓ Brand 	<ul style="list-style-type: none"> ✓ Financials ✓ People ✓ Leader Demographics 	<ul style="list-style-type: none"> ✓ Strategy Metrics UPDATE
Optional grantmaker sections ⓘ		<ul style="list-style-type: none"> Grantmaker categories NEW ✓ Application info 	<ul style="list-style-type: none"> Grants info NEW 	
Optional sections	<ul style="list-style-type: none"> More basics IRS docs Founding info 	<ul style="list-style-type: none"> Practices ✓ Equity strategies ✓ Board practices ✓ How we listen Awards & Memberships 	<ul style="list-style-type: none"> Demographics ✓ Board members ✓ Senior staff ✓ Staff 	<ul style="list-style-type: none"> Additional docs Other docs External evaluations ✓ Notes

Evaluation of Application

Volunteers will evaluate organizations based on criteria guided by the following principles:

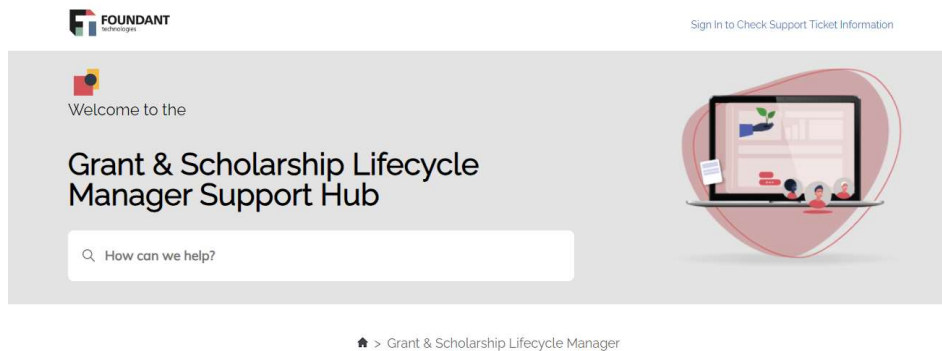
- ✓ **Equity**: Prioritizing populations furthest away from health equity that are in alignment with IEHP Foundation's target/priority populations/
- ✓ **Collaboration**: Leveraging stakeholder and community partner support and advocacy at individual, organization, community and systems levels.
- ✓ **Learning**: Organizational practices that value data-driven decision-making, outcomes evaluation and adapting strategy based on continual learning.
- ✓ **Trust**: Demonstrating fiscal responsibility, in addition to a commitment and success as trusted messengers to families with children in the Inland Empire.

Consideration will also be given to ensure organizations selected are diverse in size, reach and regional representation.

A close-up photograph of a person's hands typing on a laptop keyboard. The image is heavily filtered with a warm, orange-yellow glow, creating a soft and focused atmosphere. The hands are positioned in the center-right of the frame, with fingers resting on the keys. The laptop keyboard is visible in the foreground, and the background is blurred, showing what appears to be a window or a wall.

How to Apply: Navigating Grants Portal

Tutorials and Support



- Foundant Support Hub offers a library of tutorials, please reference as needed: [Grant & Scholarship Lifecycle Manager – Foundant Technologies](#)
- Recommended to use “applicant” as a key word in searching for tutorials and support.
- Specific helpful tutorials are linked throughout the application process.



Grants Management Portal

IEHP Foundation uses Foundation Grants Lifecycle Management (GLM) as the platform to management all grant and funding opportunities.

- To access, go to iehpfoundation.org and click on Grantee Portal in the upper righthand corner.
- For additional information on available grant/funding opportunities click the Grant tab.



Organization Profile

- Each organization should have one profile in IEHP Foundation's grant management portal
 - If another funder for your organization uses Foundant GLM, a profile will need to be created in IEHP Foundation's grant management portal, as profiles are not shared between funders.
 - If your organization has received funding from IEHP Foundation before, an organization profile already exists. Do not create a new profile.
- Each organization should only submit one application for this opportunity. Organizations that submit more than one application will not be considered.
- Organization information needed to setup an account is minimal: Name of Organization, EIN, Address, Email, Phone, Primary Contact

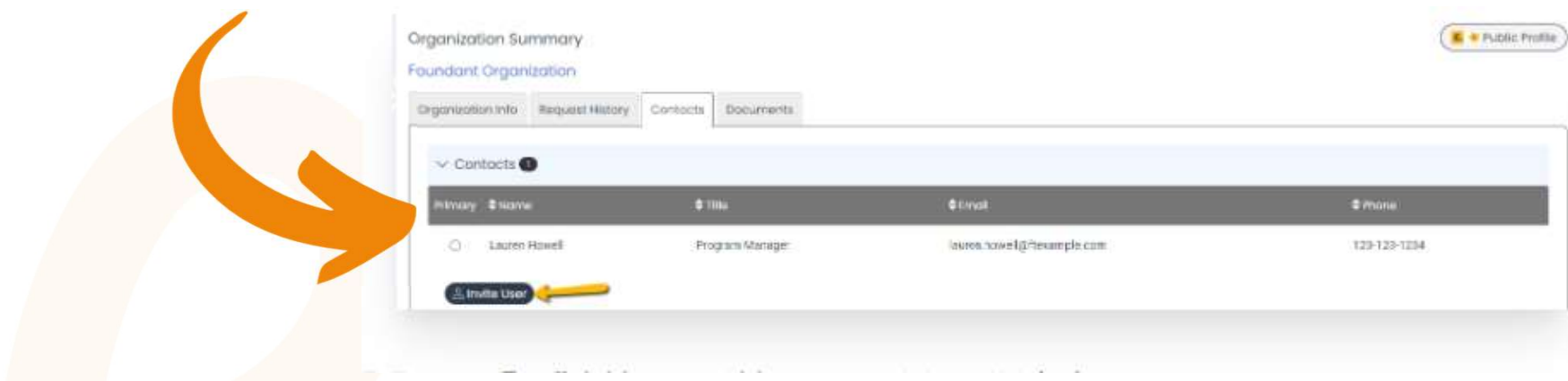
For any updates to your organization profile, email grants@iehpfoundation.org

Individual (User) Profile

- Each individual should have their own, unique user profile. IEHP Foundation recommends that users do not share logins.
- Individuals that represent multiple organizations can have one login
- Individual contact information needed to setup an account includes:
 - Name
 - Job Title
 - Address – use official organization address/place of work. Do not use personal address
 - Email
 - Phone Number
 - Password

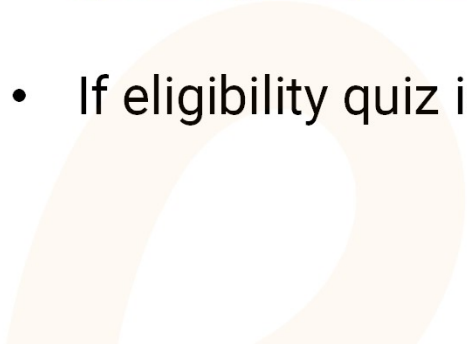
Individual (User) Profile

- Each organization will need one primary contact identified. This contact will be the one who will be notified of status updates for the organization's application.
- Multiple individuals can be assigned and invited to work on the application. Instructions available [here](#).
 - Communication between staff is important as prior versions of the application cannot be recovered.



Eligibility Quiz

- Short set of questions – should take no more than 5 – 10 minutes to complete.
- Intention is to save organizations time if they do not qualify for opportunity.
- If your organization does not currently meet the Candid Guidestar requirement but could, close out of eligibility quiz and return once at gold/platinum.
- For questions about ineligibility or to reopen the eligibility quiz, email grants@iehpfoundation.org.
- If eligibility quiz is passed successfully, you will be given an access code to apply.



Application (LOI)

- LOI = first round application
- Request = application
- Make sure to save application periodically to not lose data.
- Can preview all questions from grants management portal.
- For full list of Round 1 questions, [click here](#).
- Some information can be imported from Candid profile.

LOI Preview As Applicants Question List

Process Manager / Champions for Vibrant Health Leadership Network / LOI - Champions for Vibrant Health Leadership Network / Preview

Fields with an asterisk (*) are required.

> General Instructions

Organization Demographic & Program Details

Project Name*

This is a required field for the grants management portal. Please type "2025-26 Champions for Vibrant Health Leadership Network - Your Organization Name". Do not use abbreviations or nicknames for your organization.

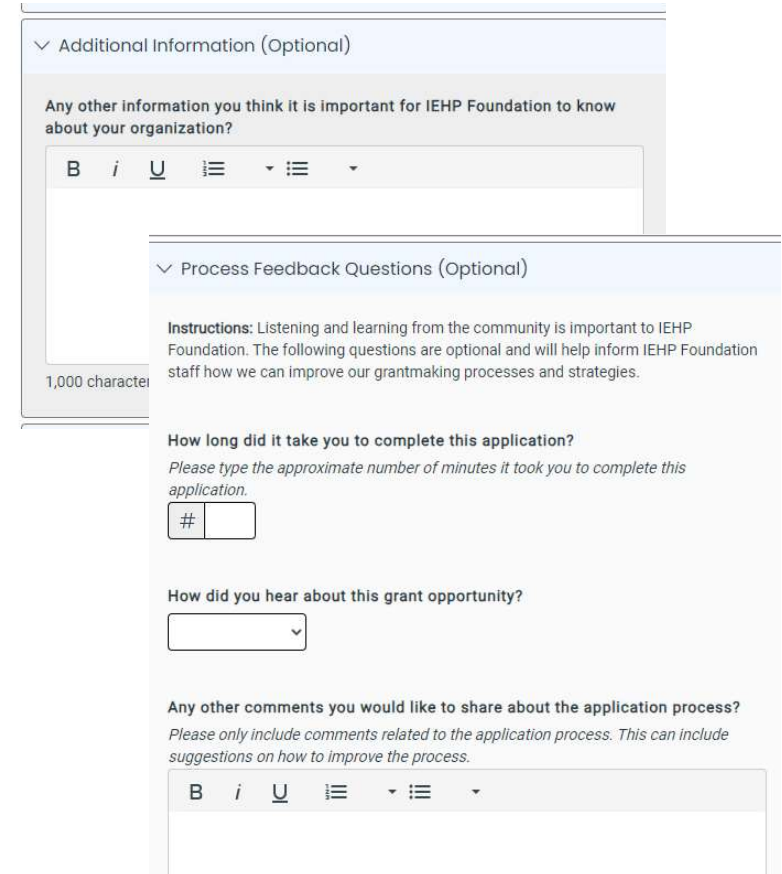
Examples:
"2025-26 Champions for Vibrant Health Leadership Network - IEHP Foundation"
"2025-26 Champions for Vibrant Health Leadership Network - Do Good Nonprofit"

Incorporation Year

Mission Statement & Organization Background ?

Application Sections

- General Instructions – read thoroughly
- Organization Demographic & Program Details
- Organization Financial Details
- Organization Board
- Executive Leader
- Emerging Leader
- Essay Questions – three (3) – principle aligned
- Optional: Additional Information & Process Feedback

A screenshot of an application form interface. The top section is titled 'Additional Information (Optional)' and contains a text area with a character count of '1,000 character'. Below this is a section titled 'Process Feedback Questions (Optional)'. It includes instructions: 'Listening and learning from the community is important to IEHP Foundation. The following questions are optional and will help inform IEHP Foundation staff how we can improve our grantmaking processes and strategies.' The first question is 'How long did it take you to complete this application?' with a sub-instruction 'Please type the approximate number of minutes it took you to complete this application.' and a text input field containing '#'. The second question is 'How did you hear about this grant opportunity?' with a dropdown menu. The third question is 'Any other comments you would like to share about the application process?' with a sub-instruction 'Please only include comments related to the application process. This can include suggestions on how to improve the process.' and a text area with a rich text editor toolbar.

Important Notes

- **Apply early:** Allow sufficient response time for any questions, updates to Candid Guidestar and technology concerns. Late applications **will not** be accepted.
- **Status Updates:** Email communications regarding the status of your application will come from IEHP Foundation Grants administrator@grantinterface.com. You may also view your application status update by logging into the grants management portal.
- **Successful Submission:** An application is considered successfully submitted only if you receive a confirmation email.
- **Follow instructions:** Read all instructions carefully and thoroughly. Failure to adhere to instructions will impact the evaluation of your application.

Important Notes - continued

- **Reach Out**: IEHP Foundation recognizes organizations may have unique and nuanced experiences. Email grants@iehpfoundation.org for any questions. Allow 1 – 3 business days for a response.
- **Be Honest**: IEHP Foundation values honesty and transparency. This opportunity is intended to be responsive to the opportunities and challenges facing Inland Empire nonprofits.



A blurred background image of a classroom or meeting room. The scene is bathed in a warm, orange-yellow light. In the foreground, the back of a person's head and shoulders is visible on the left. In the center-right, a person is seen from behind, raising their right hand as if to ask a question or participate in a discussion. Other people are faintly visible in the background, some also appearing to be engaged in the activity.

Questions & Answers



**Thank
You!**

